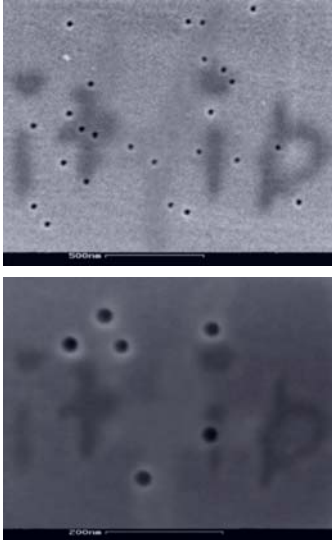




1/1

AMORPHOUS POLYIMIDE MEMBRANES



SEM pictures of an amorphous polyimide track etched membrane with 25 nm pore size

○ thickness

- used raw film has a initial thickness of 25 μm

○ porosity

- track etching feasibility shown
- first trials made with 25 nm pore size
- pore density of $1\text{E}9$ & $4\text{E}9$ cm^{-2}
- all pores perpendicular to the membrane surface

○ main characteristics

- thermoplastic
- amorphous
- transparent, amber-coloured
- density : $1,27$ g cm^{-3}
- max. temperature of use : $170\text{-}200$ $^{\circ}\text{C}$
- good resistance to dilute acids and to alcohols

it4ip s.a.

rue J. Bordet (Z.I. C - Activalis) - 7180 Senefte — Belgium
tel : +32 (0)64 371001 — fax : +32 (0)64 371021

contact@it4ip.be
<http://www.it4ip.be>